



Asset (Pavement) Management Systems: Overview

Arif Rafiq
Deighton Associates Limited

October 20, 2010 - Rocky Mountain PPP (Boise, Idaho)

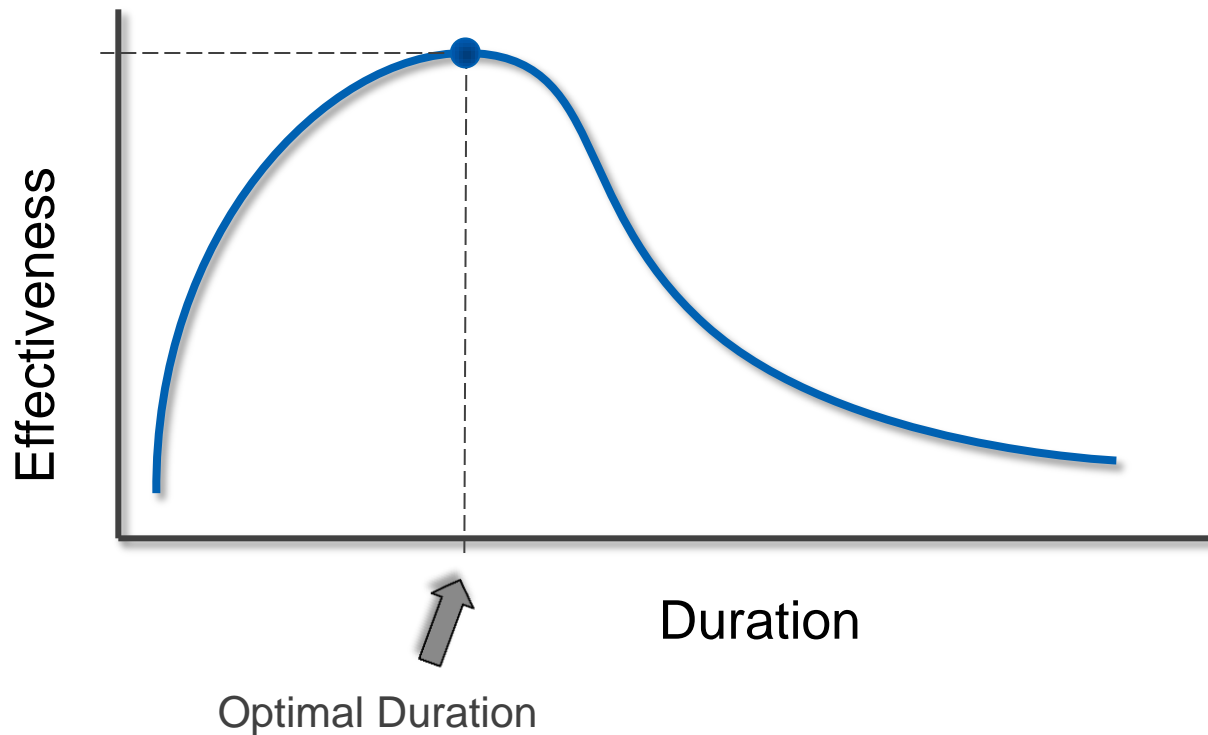
Data is Simply Data



Age = 7	Behavior = 2	Duration = 10	Behavior = 9
Duration = 4	Duration = 3	Age = 12	Duration = 2
Behavior = 1	Behavior = 8	Behavior = 7	Duration = 1
Age = 16	Age = 9	Behavior = 6	Age = 8
Duration = 2	Age = 16	Duration = 9	Behavior = 3
Age = 11	Behavior = 6	Duration = 7	Duration = 8
Behavior = 3	Duration = 4	Behavior = 4	Age = 14
Duration = 8	Age = 10	Age = 15	Behavior = 2

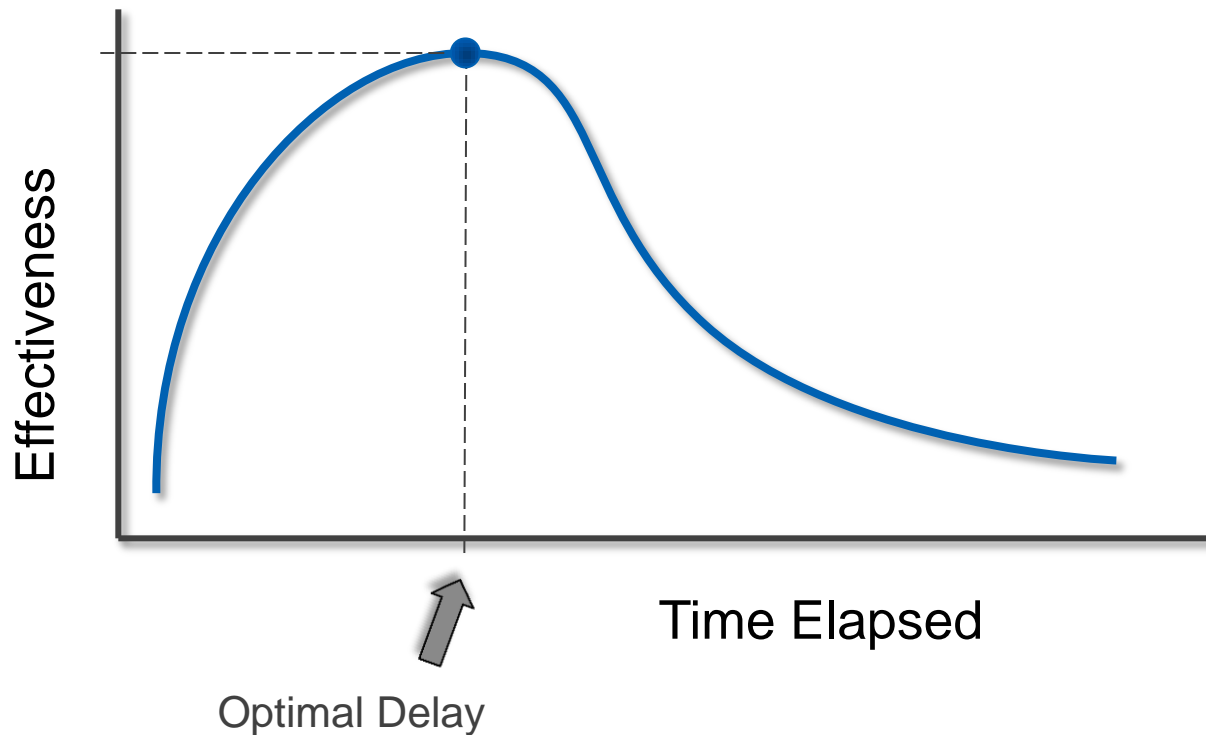


Effectiveness of Grounding Your Kids (Ages 8 to 16)



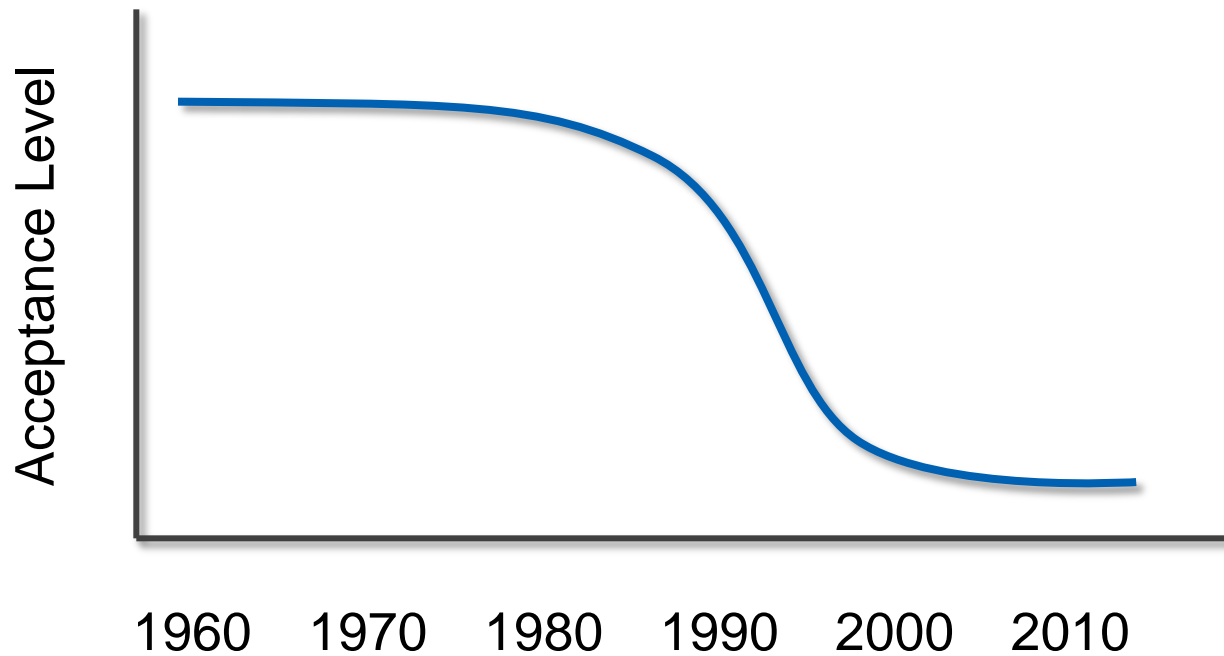


Effectiveness of Treatment “A” vs. Time Elapsed





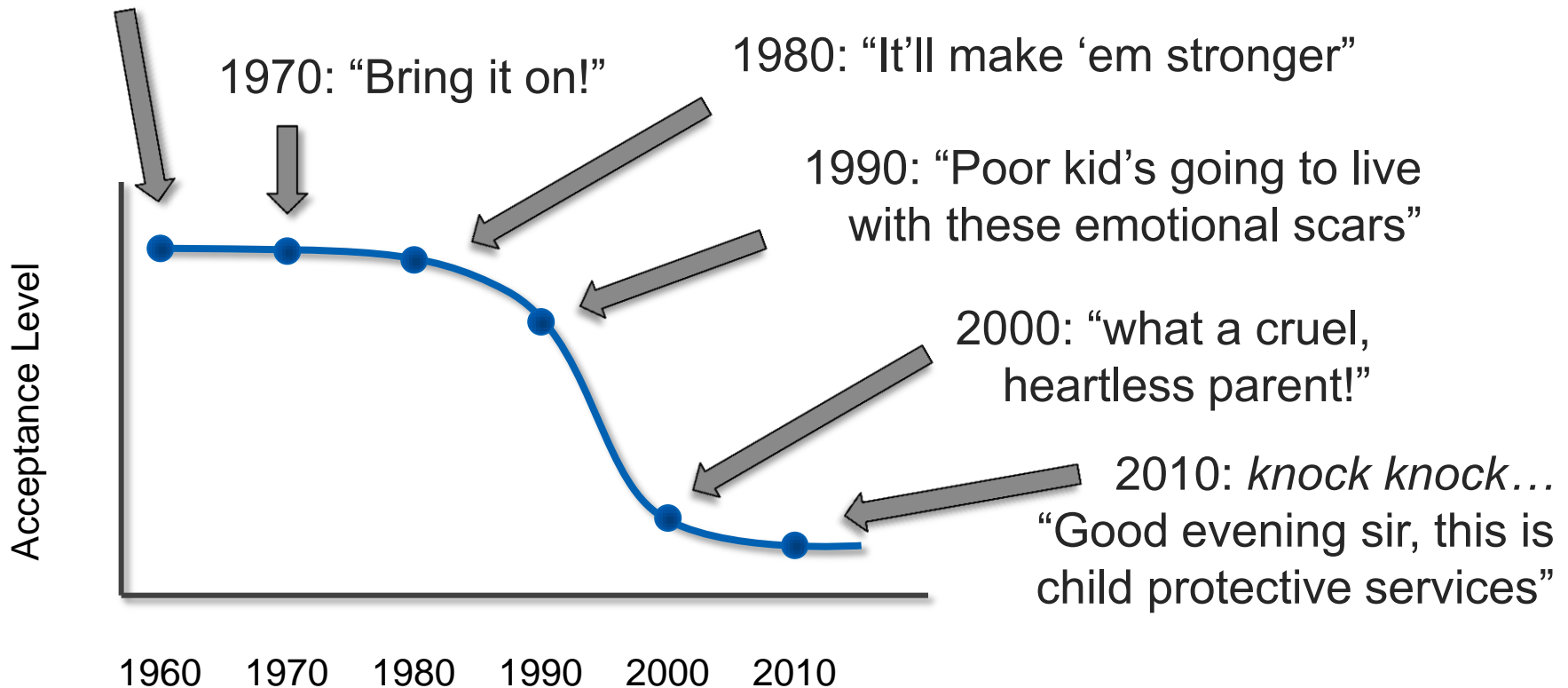
Physically Disciplining Social Acceptance of ~~Beating~~ Your Kids





Physically Disciplining Social Acceptance of ~~Beating~~ Your Kids

1960: "Instilling fear is a good thing!"





An Asset Management System provides you with the tools to transform your data into *Information*

... Present it clearly and effectively

... Permit multiple people access to it

... with an easy to use interface

... and allow them to ask the real tough questions.



What is the best way to discipline my kids?

- Grounding
- Spanking
- Family Discussion
- Timeouts
- “The Belt”
- Silent Treatment

... and when should I use them?



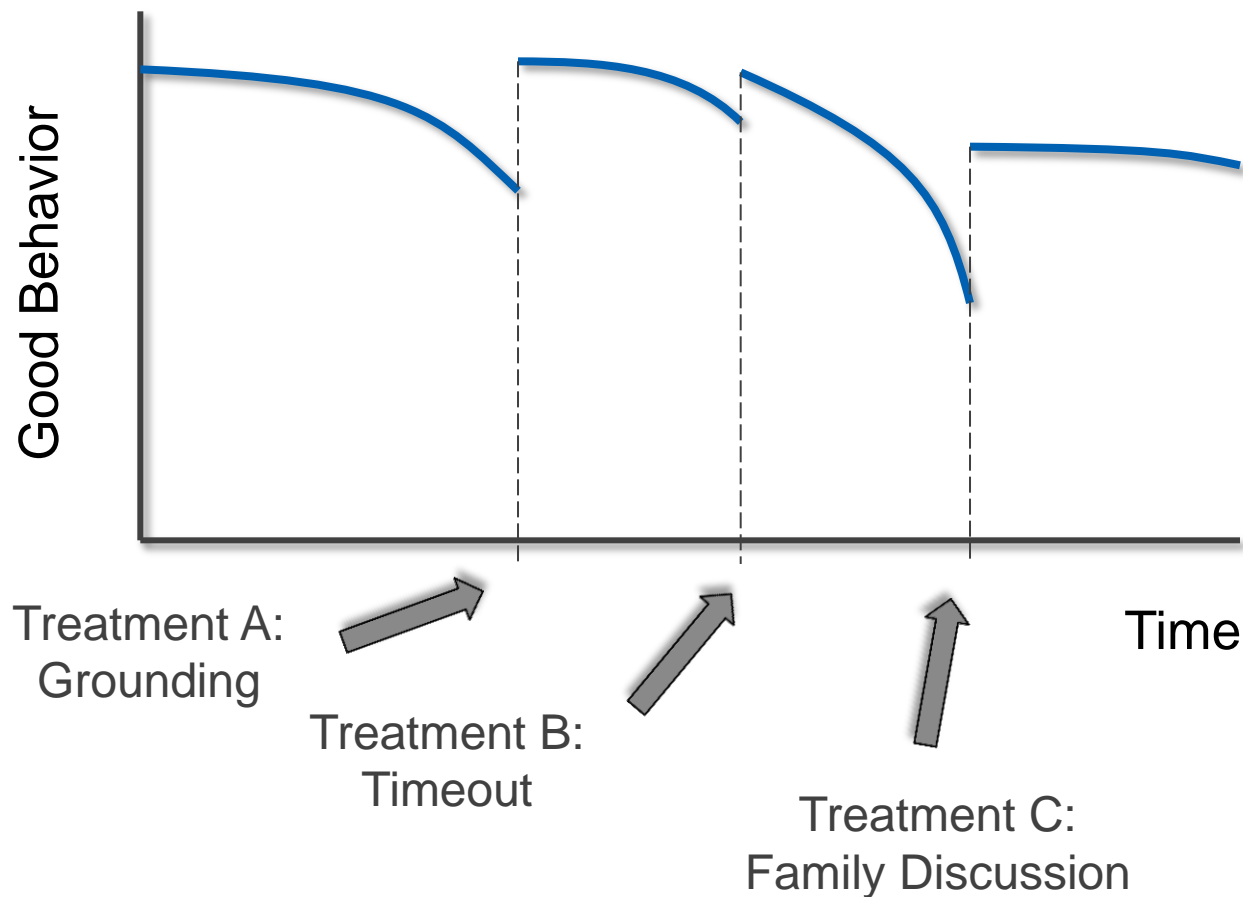
What are the best treatments for my network?

- Crack Seal
- Cold-in-Place Recycling
- Overlay
- Full Depth Reclamation
- Chip Seal
- Micro-surfacing

... and when should I use them?

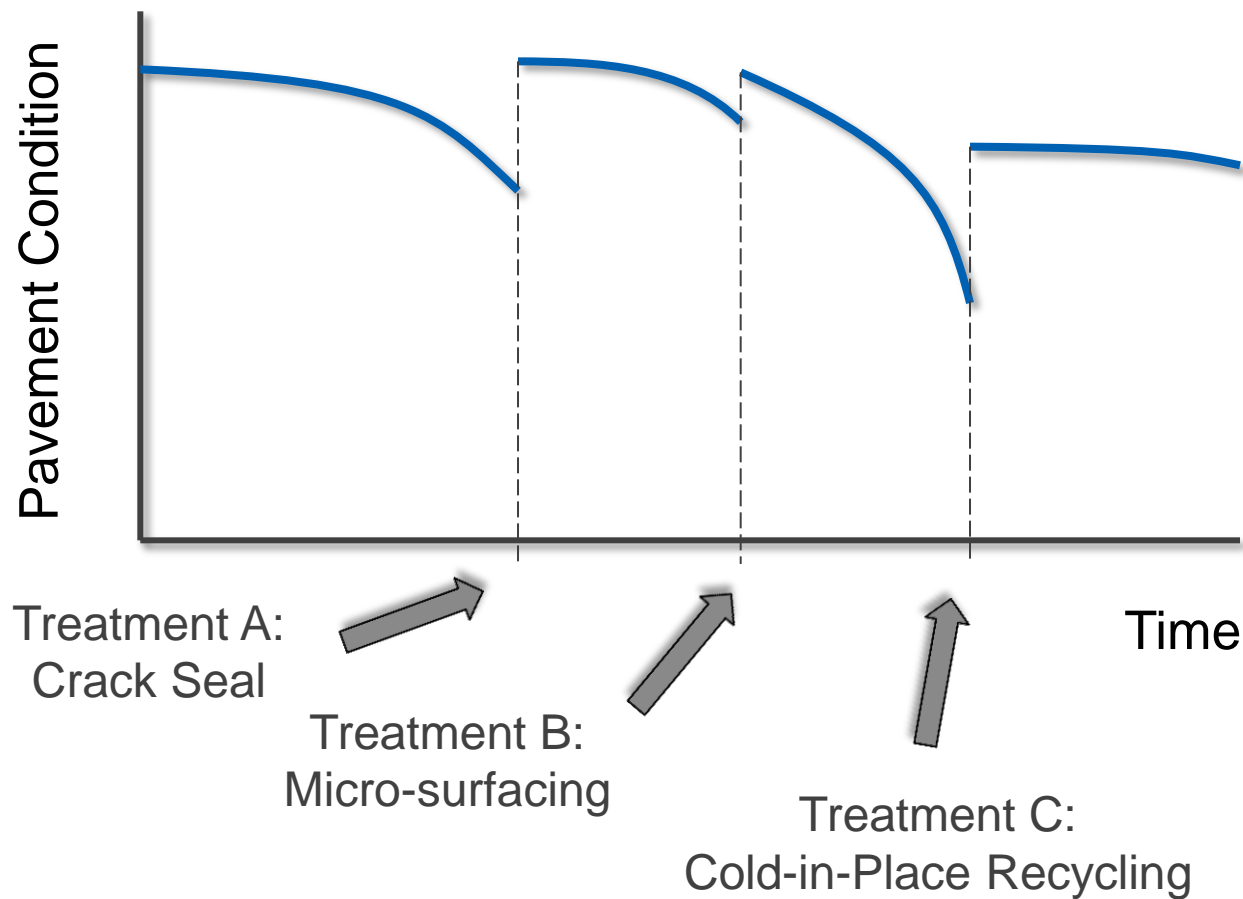


Your Kids' Behavior as a Result of Treatment



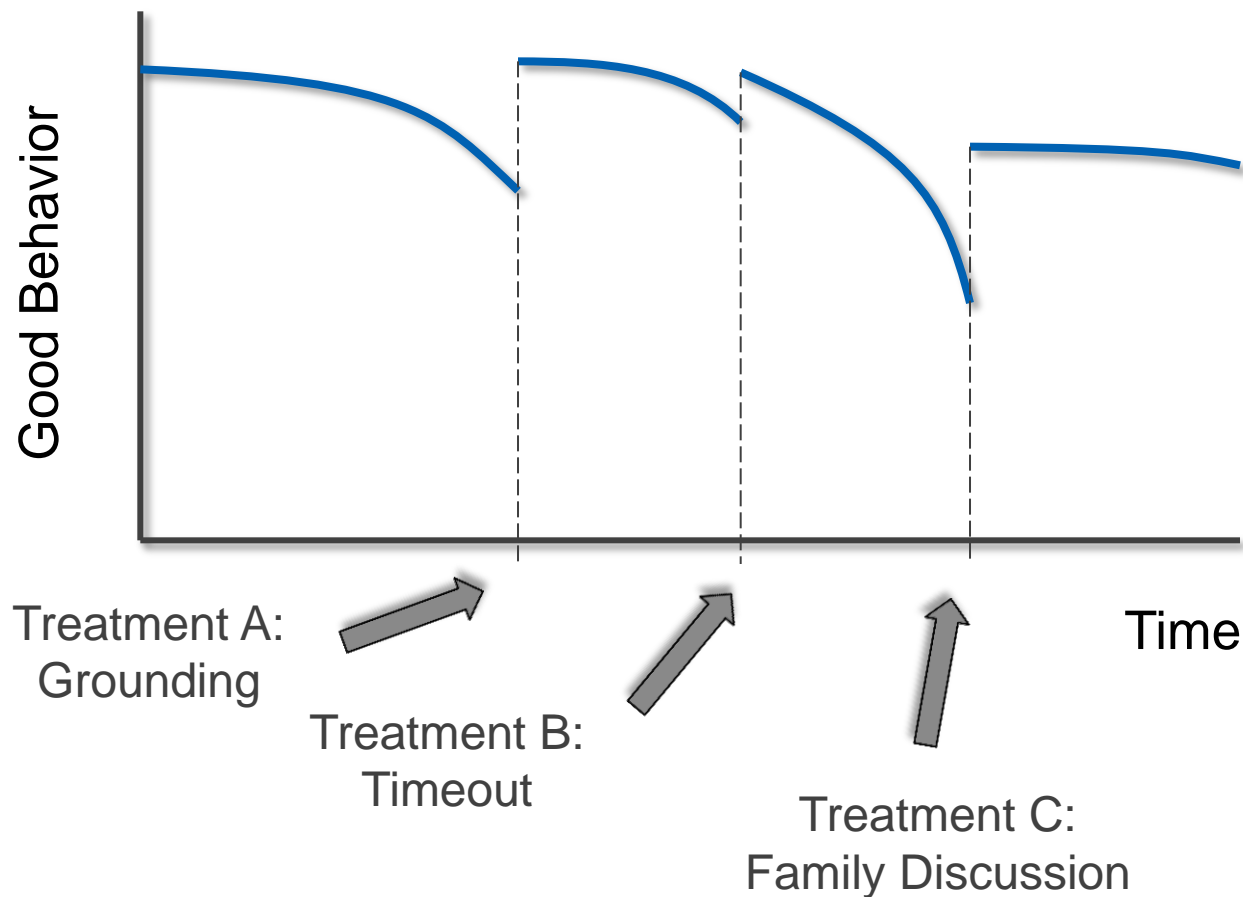


Pavement Condition as a Result of Treatment

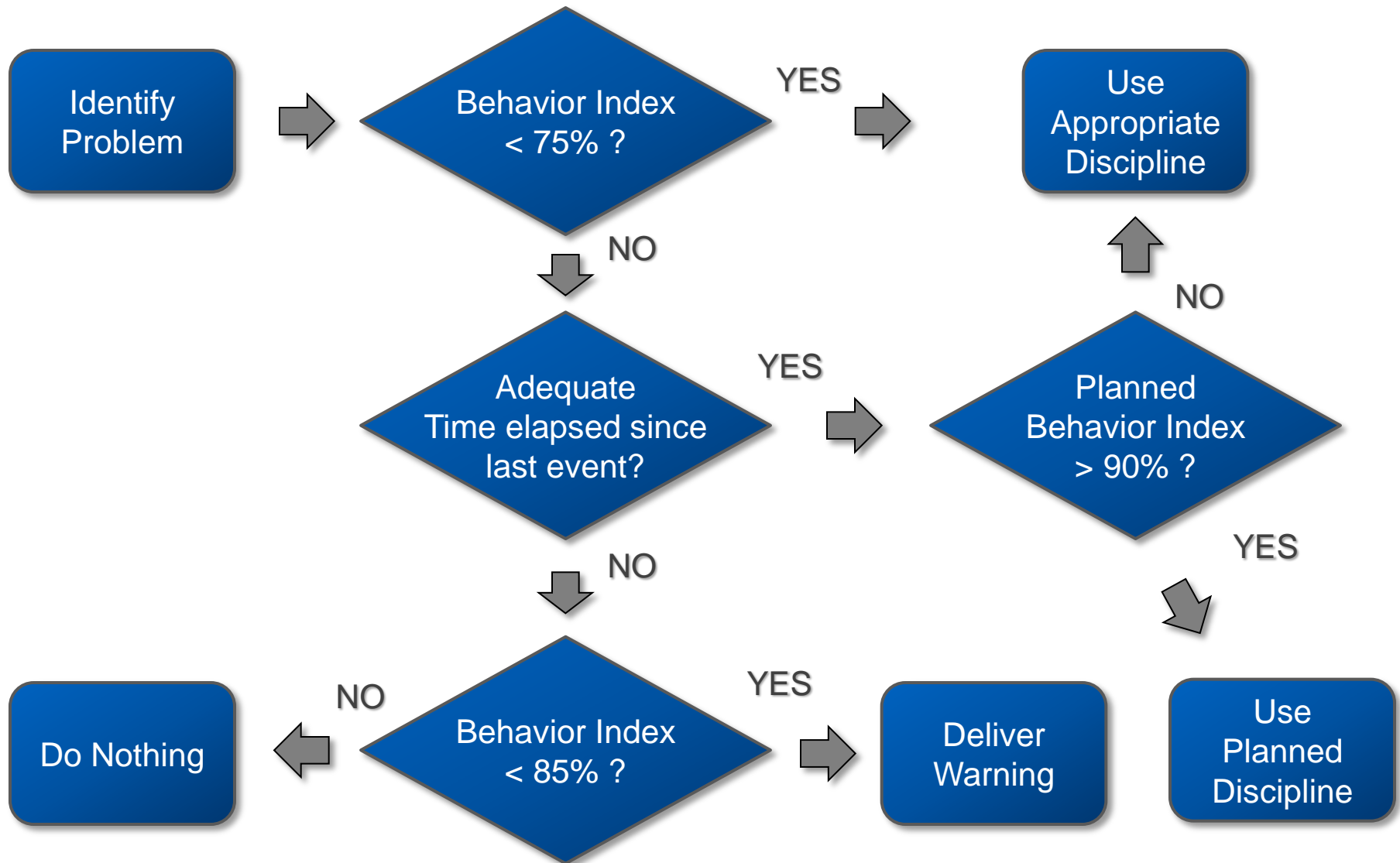




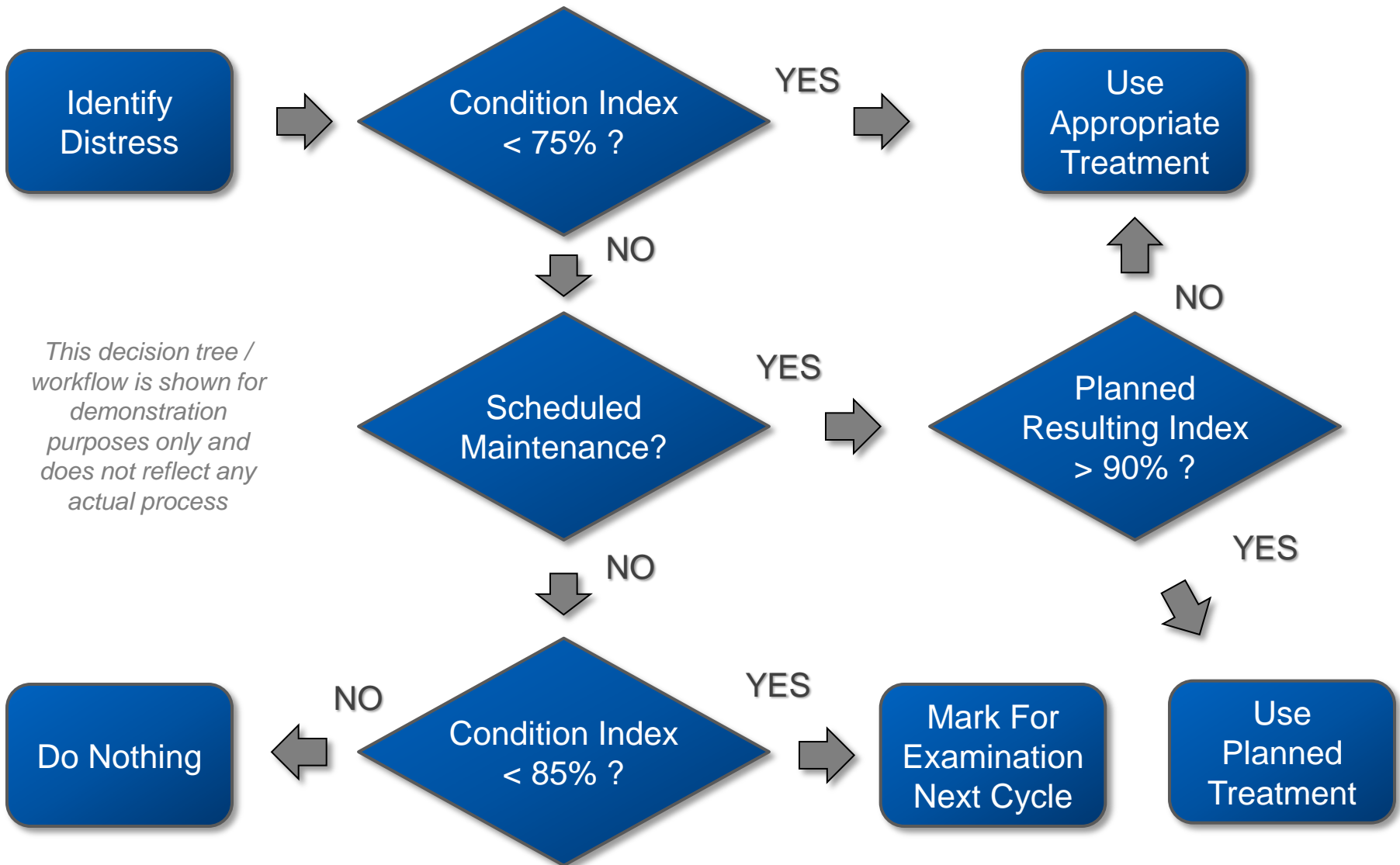
Your Kids' Behavior as a Result of Treatment



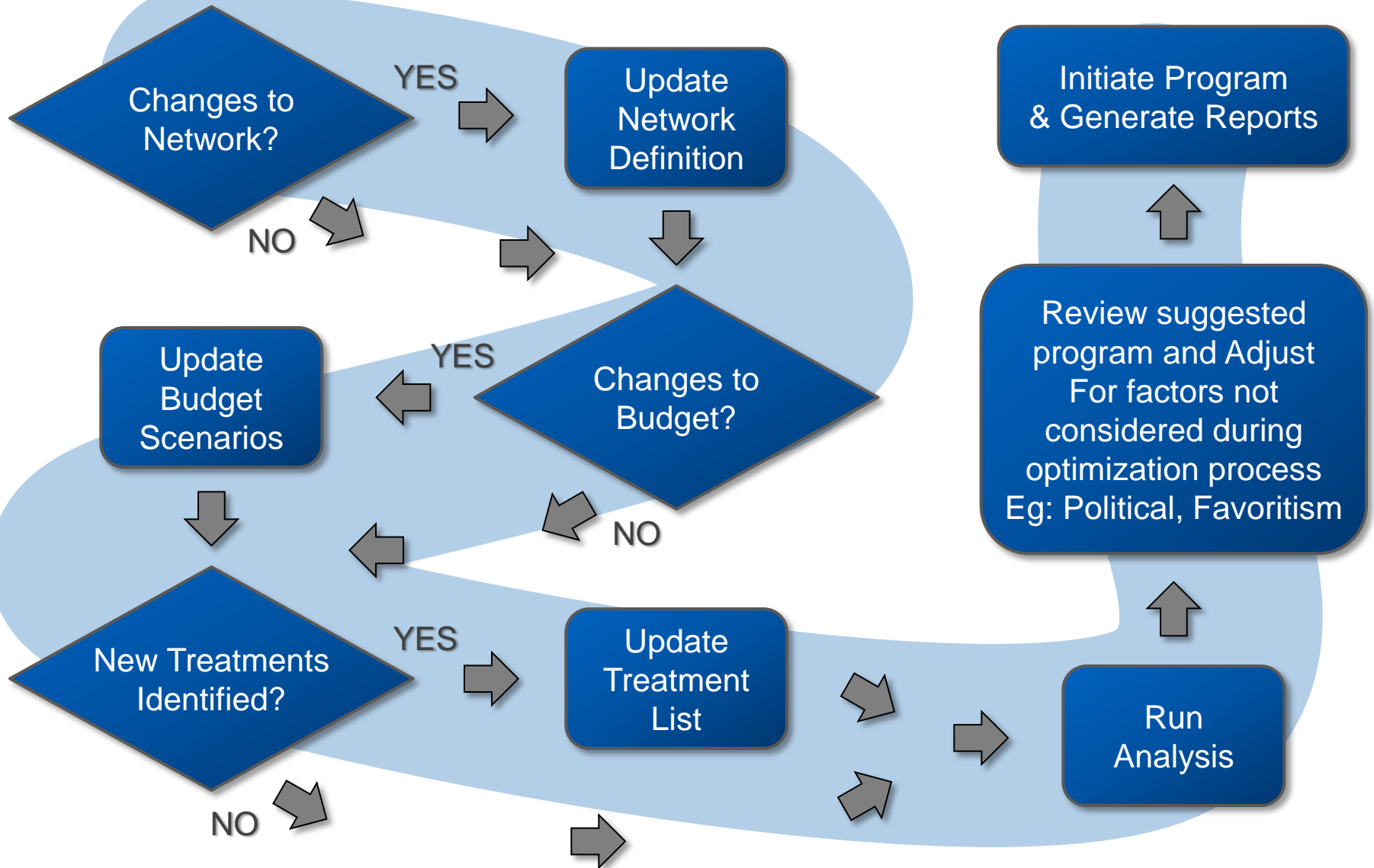
Effective Process Planning



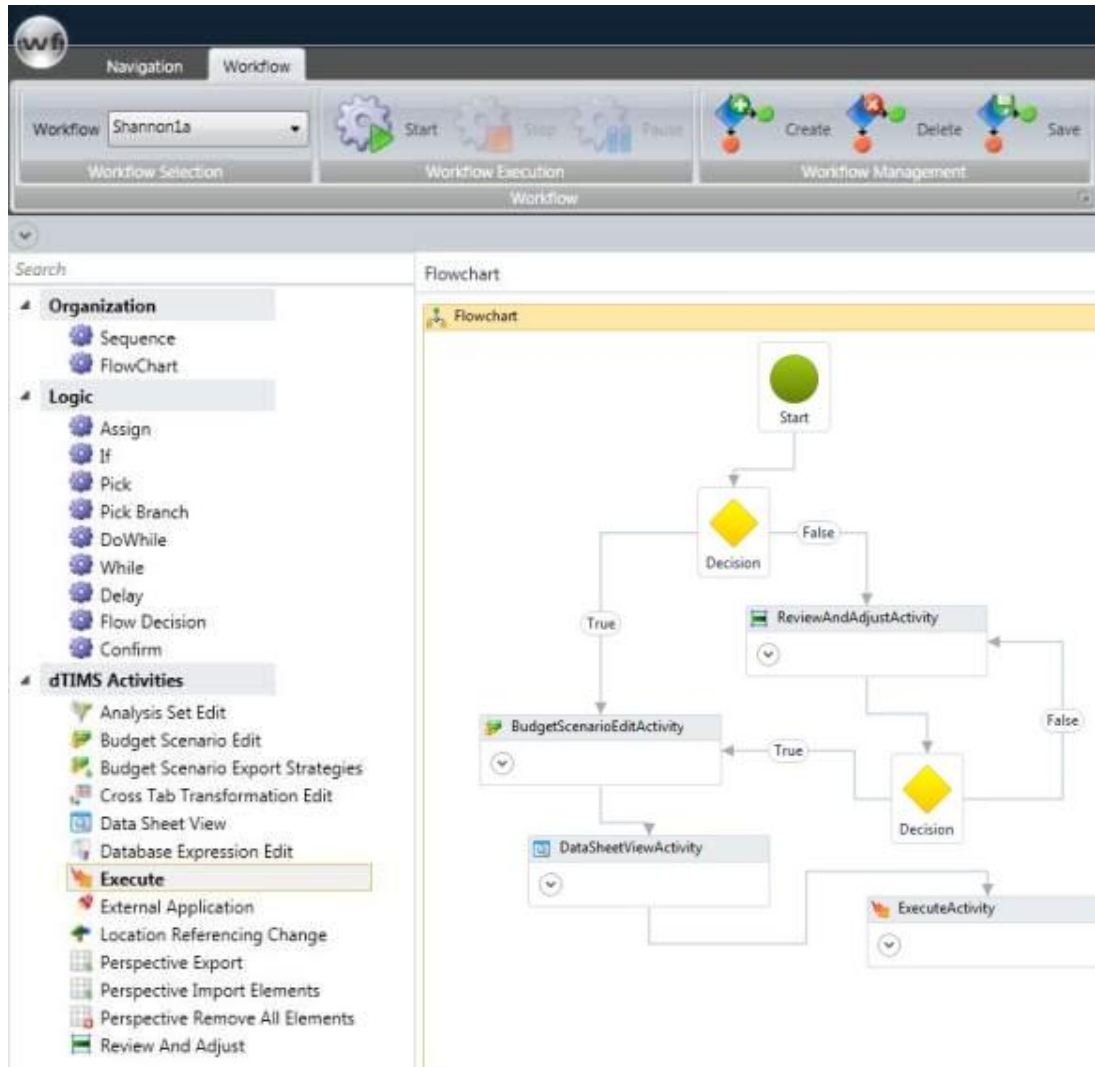
Effective Process Planning



Smooth Process Workflows



Smooth Process Workflows

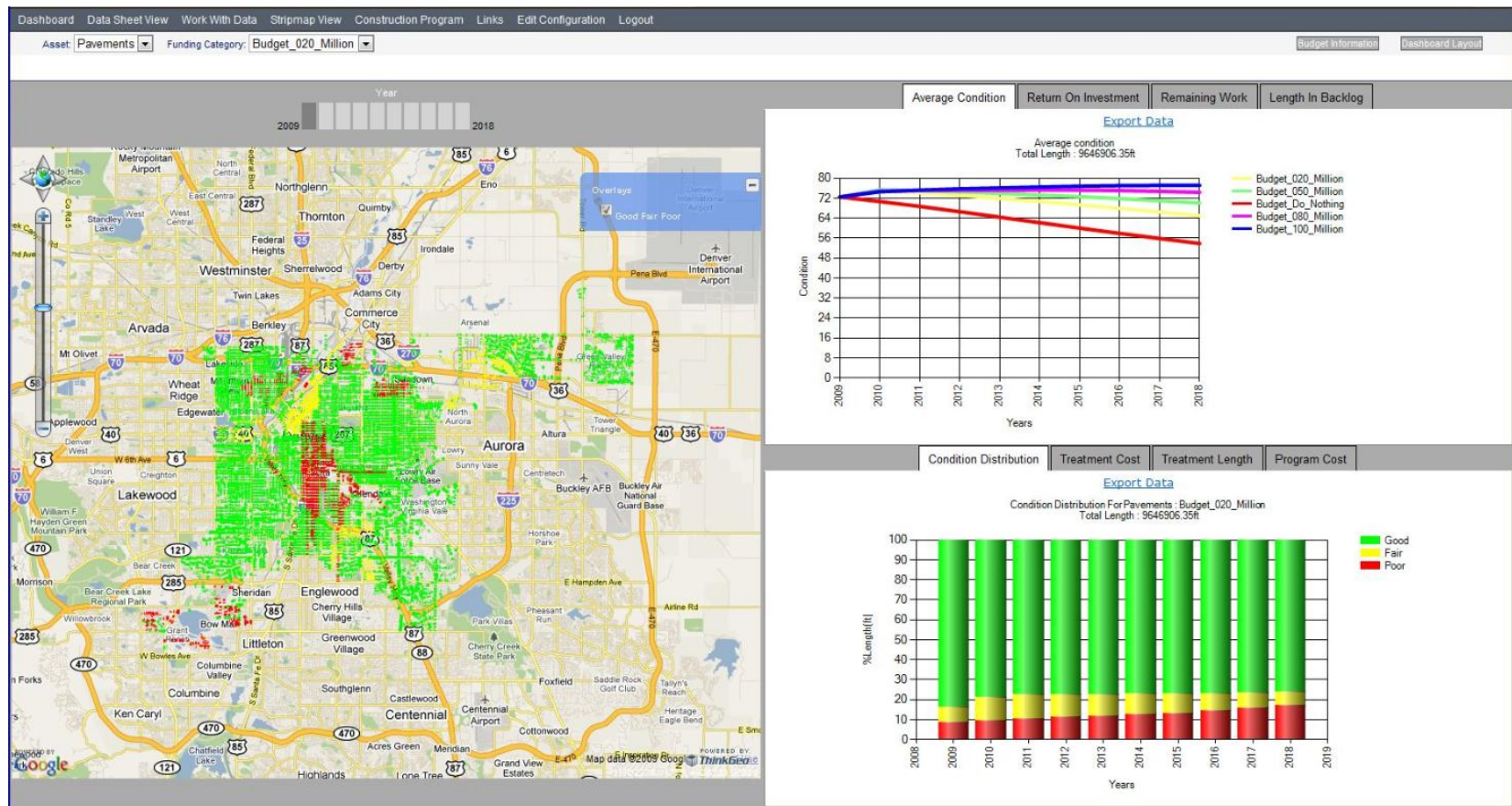


- Minimize the learning curve
- Straightforward Process Development
- Create ad-hoc Customizable Workflows

Effective Visualization



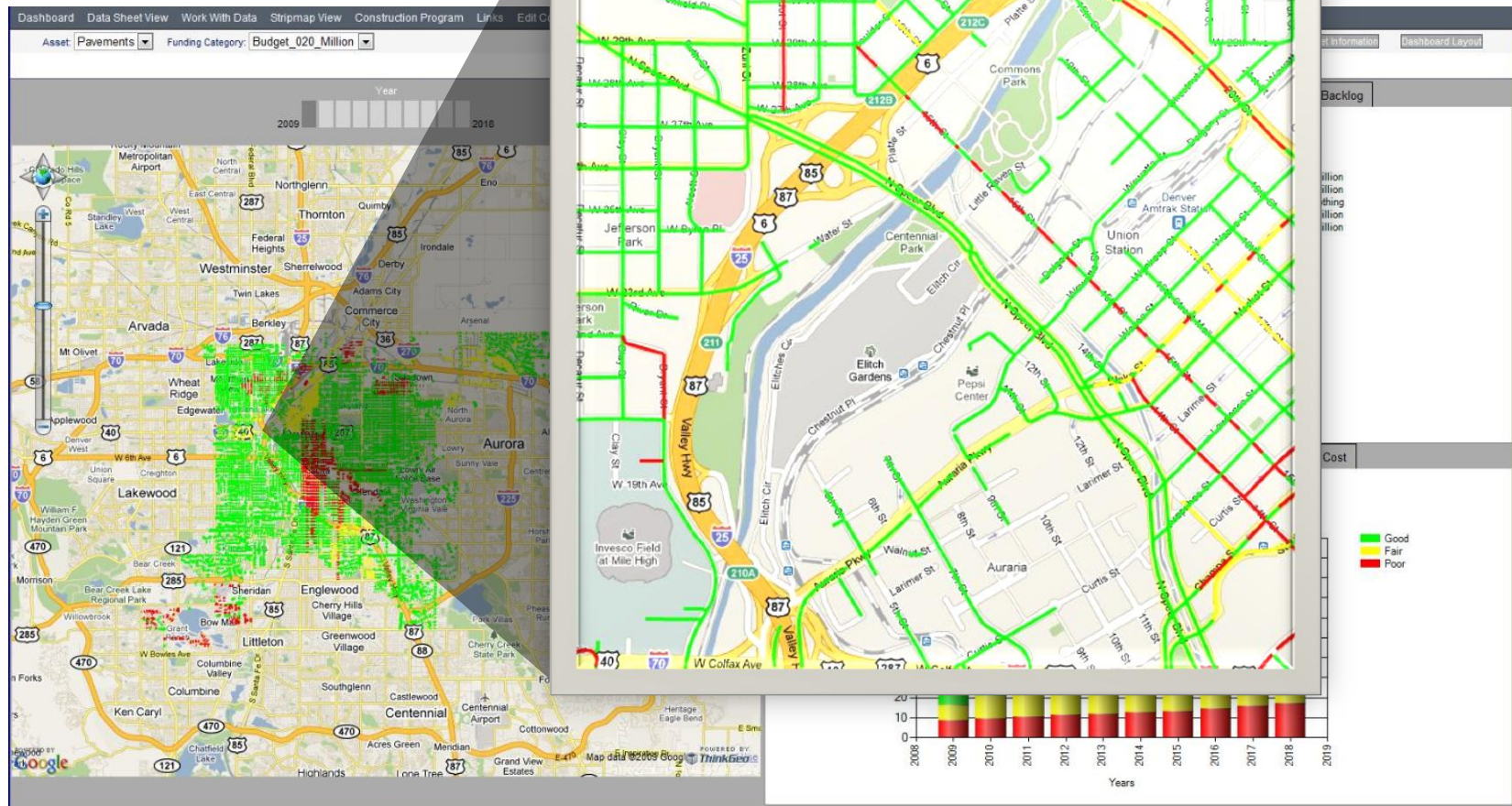
Illustrate the answers to those tough questions...



Effective Visualization



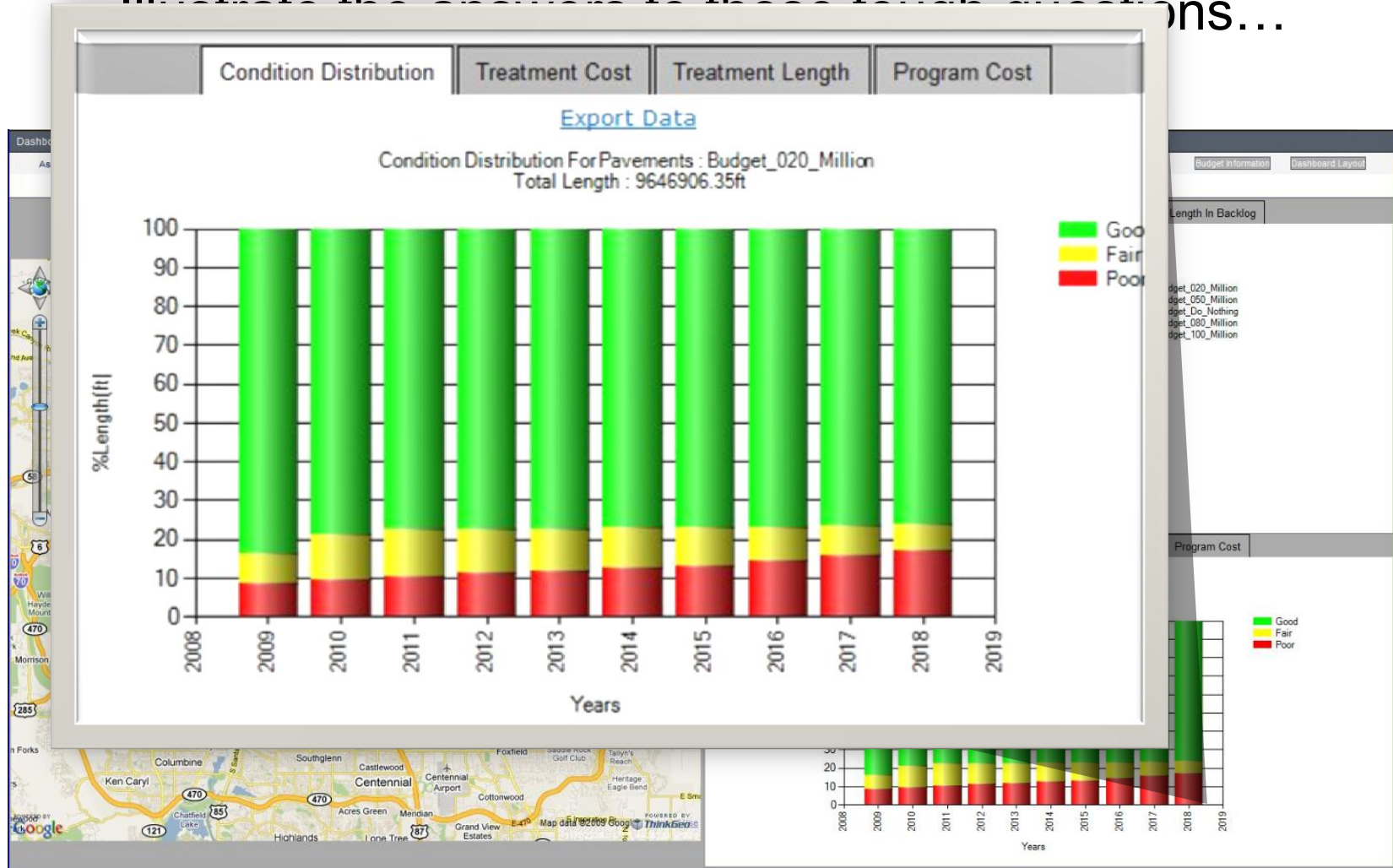
Illustrate the answers to those tough questions...



Effective Visualization

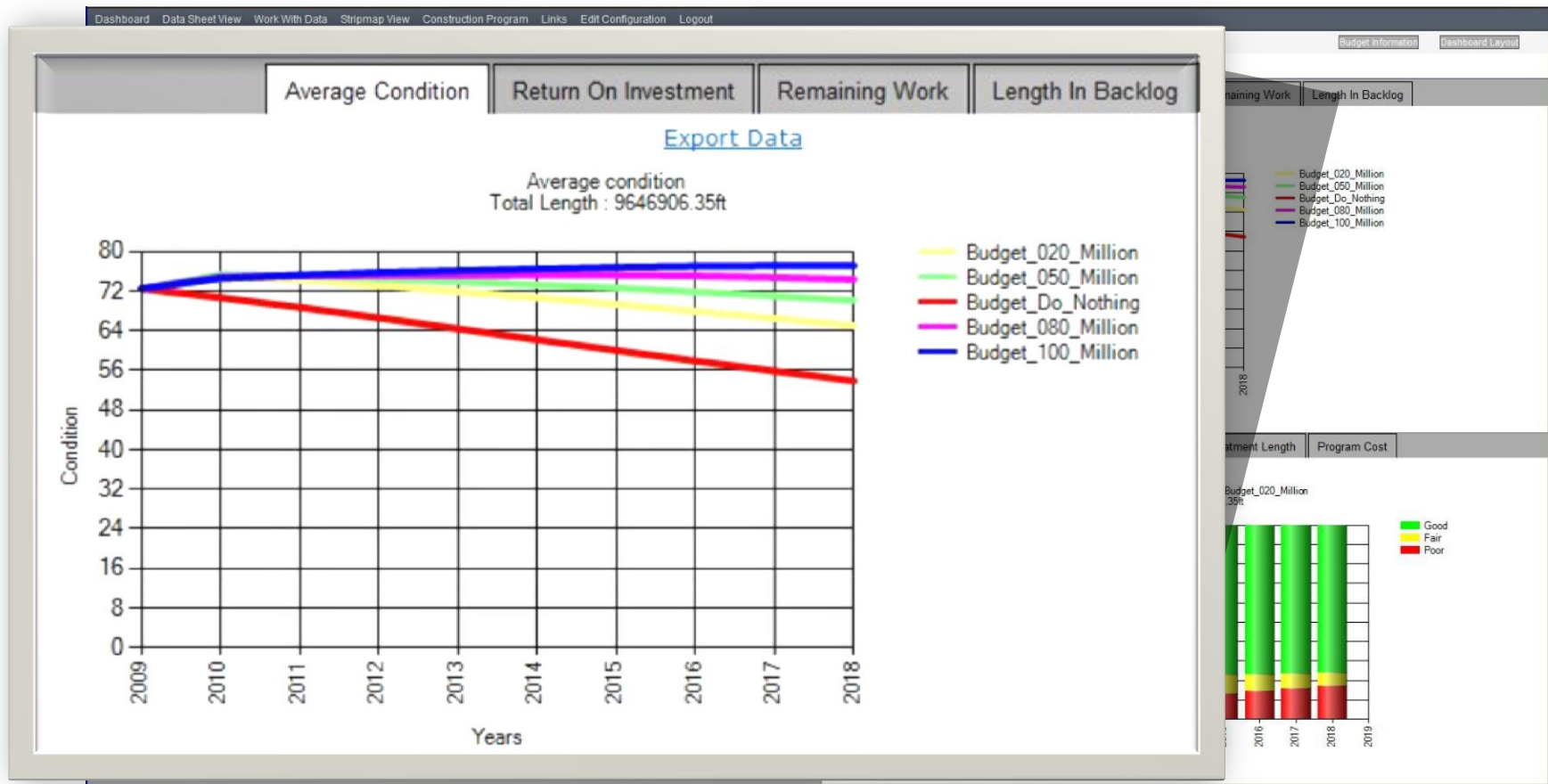


Illustrate the answers to these tough questions...





Illustrate the answers to those tough questions...





What is the best way to discipline my kids?

- Grounding
- Spanking
- Family Discussion
- Timeouts
- “The Belt”
- Silent Treatment



What is the best way to discipline my ~~kids?~~

Dog?

- Grounding Scolding
- Spanking Refrain From Petting
- Family Discomfort Withhold Doggie Treats
- Timeouts Stare down
- “The Belt” “The Belt”
- Silent Treatment Ignore Them

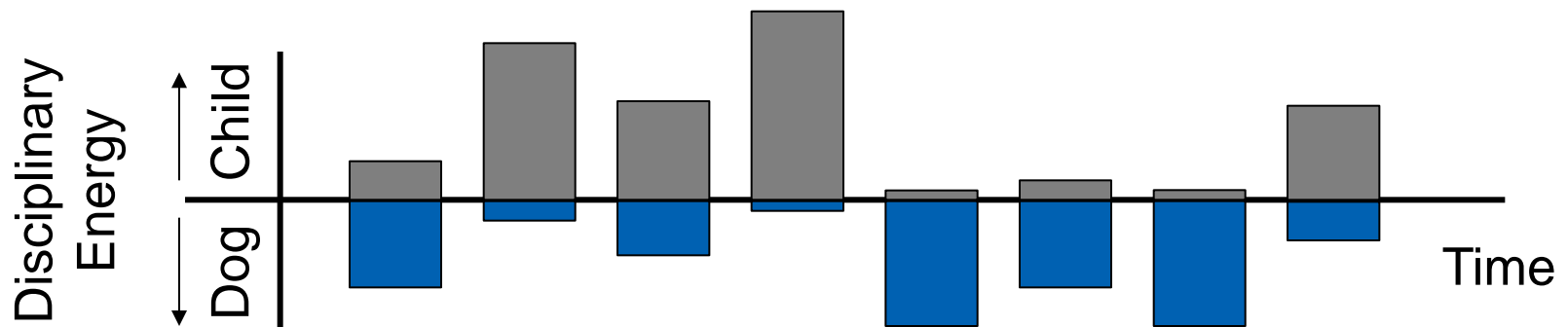
Different set of treatments... same overall goal



Different set of treatments... same overall goal

- Targets:
- Child's behavioral index $> 80\%$
 - Dog's behavioral index $> 70\%$

- Constraint:
- Limited Budget
... of "disciplinary energy"
cannot exceed 100%

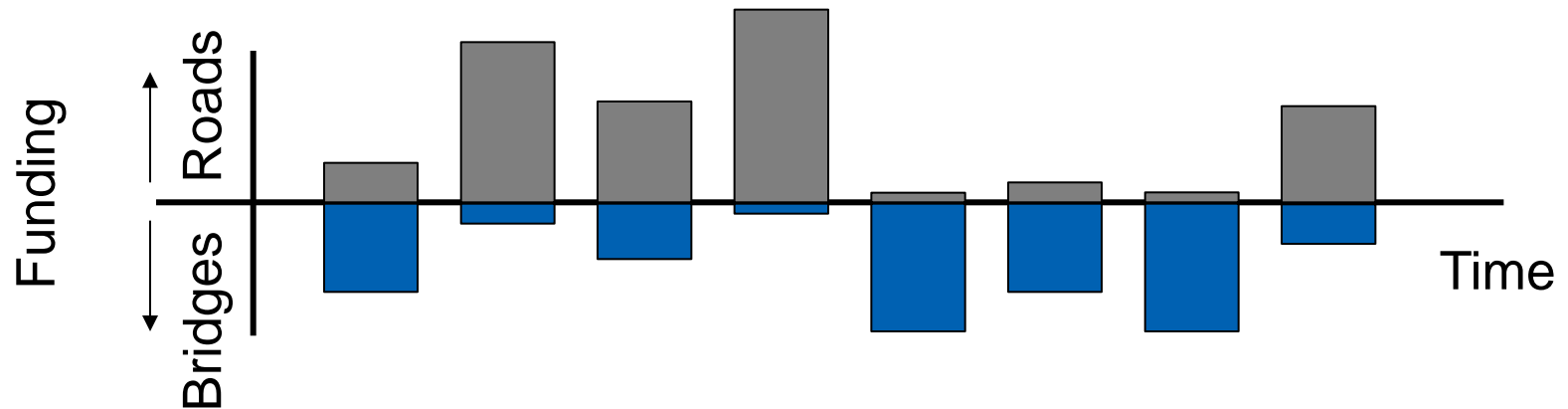




Different set of treatments... same overall goal

- Targets:
- Roads' Condition index $> 80\%$
 - Bridges' Condition index $> 70\%$

- Constraint:
- Limited Budget
... of "available funds"
cannot exceed \$10M per year





What are the possible career choices for my kids?

- Engineer
- Doctor
- Physicist
- Sanitation Worker
- Stripper



What are the possible career choices for my kids?

- What is the likelihood they will choose to become an engineer?
- Engineer
- Doctor
- What is the risk they will make a “less than ideal” or “less traditional” choice?
- Physicist
- Sanitation Worker
- Stripper
 - When should I intervene to help prevent this choice from being made?



What are the possible negative effects of my selected program?

- Catastrophic Failure
- Extensive Vehicle Damage
- Environmental Harm
- Reduced Safety
- Negative Public Perception
- What is the likelihood of material failure?
- What is the risk of environmental degradation due to a particular treatment program?
- When should I intervene to help prevent these effects from occurring?



An Asset Management System provides you with the tools to transform your data into *Information*

... Present it clearly and effectively (*visualization*)

... Permit multiple people access to it (*transparency*)

... with an easy to use interface (*efficiency*)

... and allow them to ask the real tough questions.
(*even the ones you haven't thought of yet*)



Thank You

Arif Rafiq
Deighton Associates Limited
arif.rafiq@deighton.com

October 20, 2010 - Rocky Mountain PPP (Boise, Idaho)